



voorgevel

woningnummer 7, 11

woningnummer 8, 12



rechter zijgevel

woningnummer 8, 12



achtergevel

woningnummer 8, 12

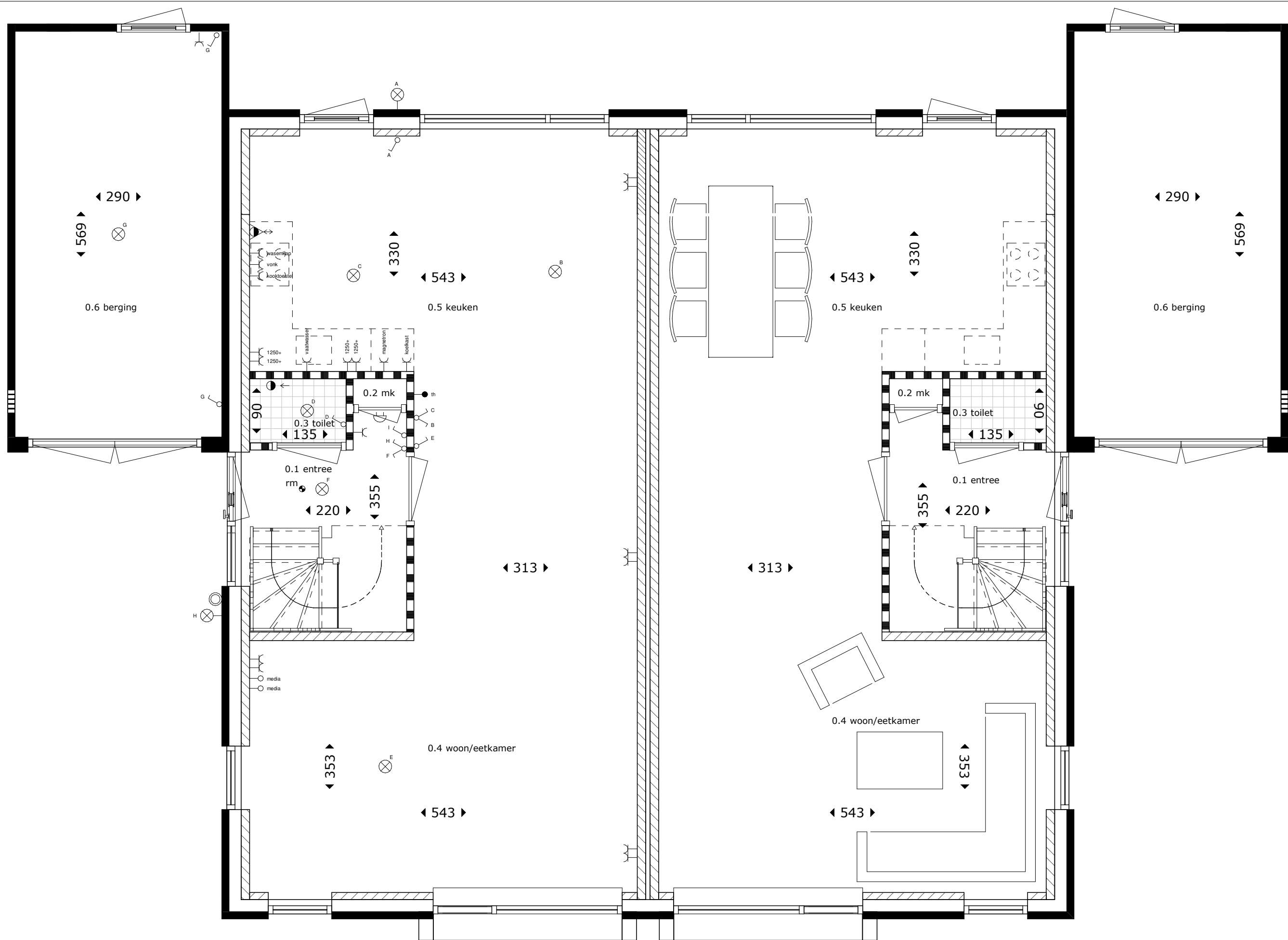
woningnummer 7, 11



linker zijgevel

woningnummer 8, 12

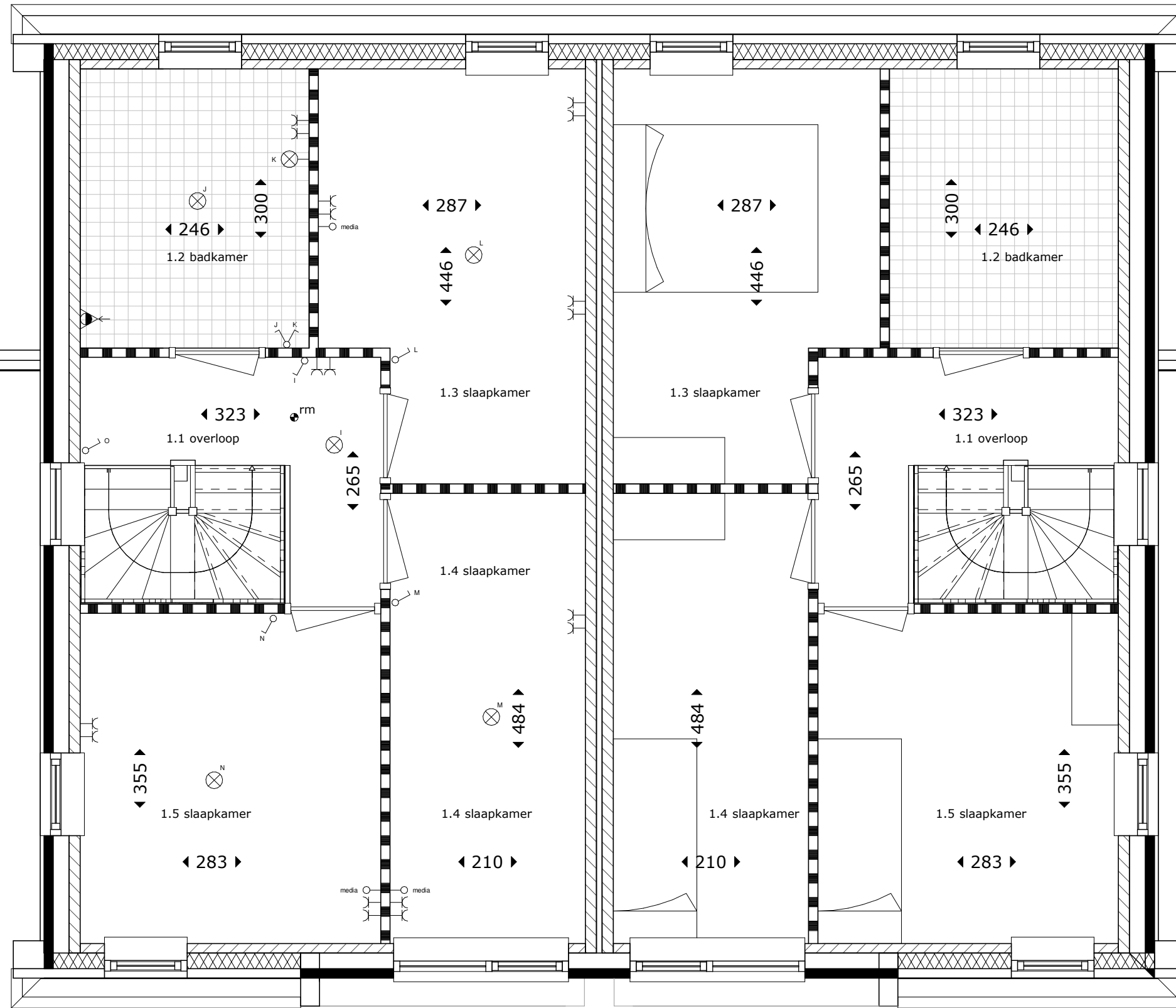




16 woningen plan stakenbeek, oldenzaal
begane grond, type A, woningnummer 7, 8, 11, 12

8472

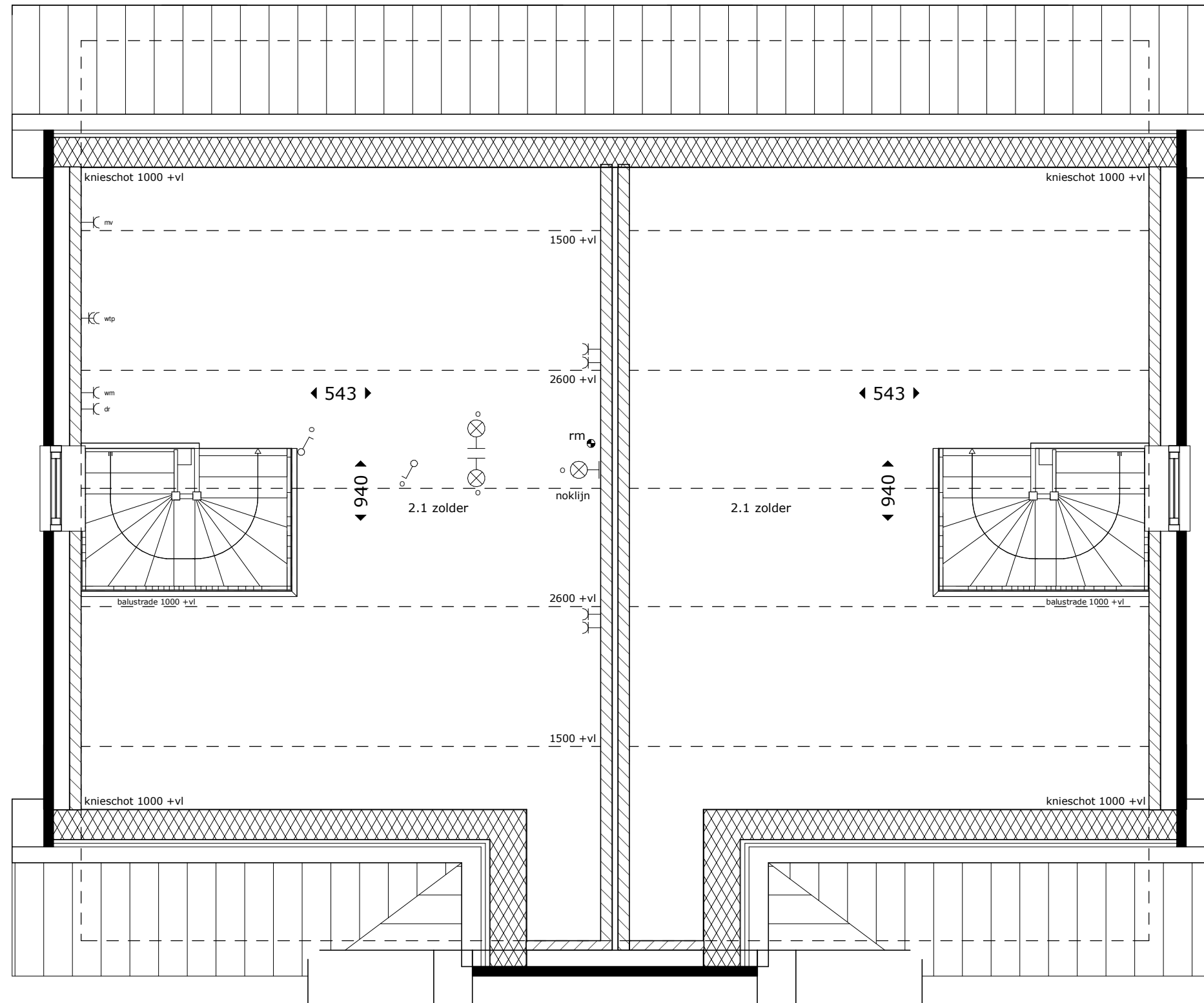


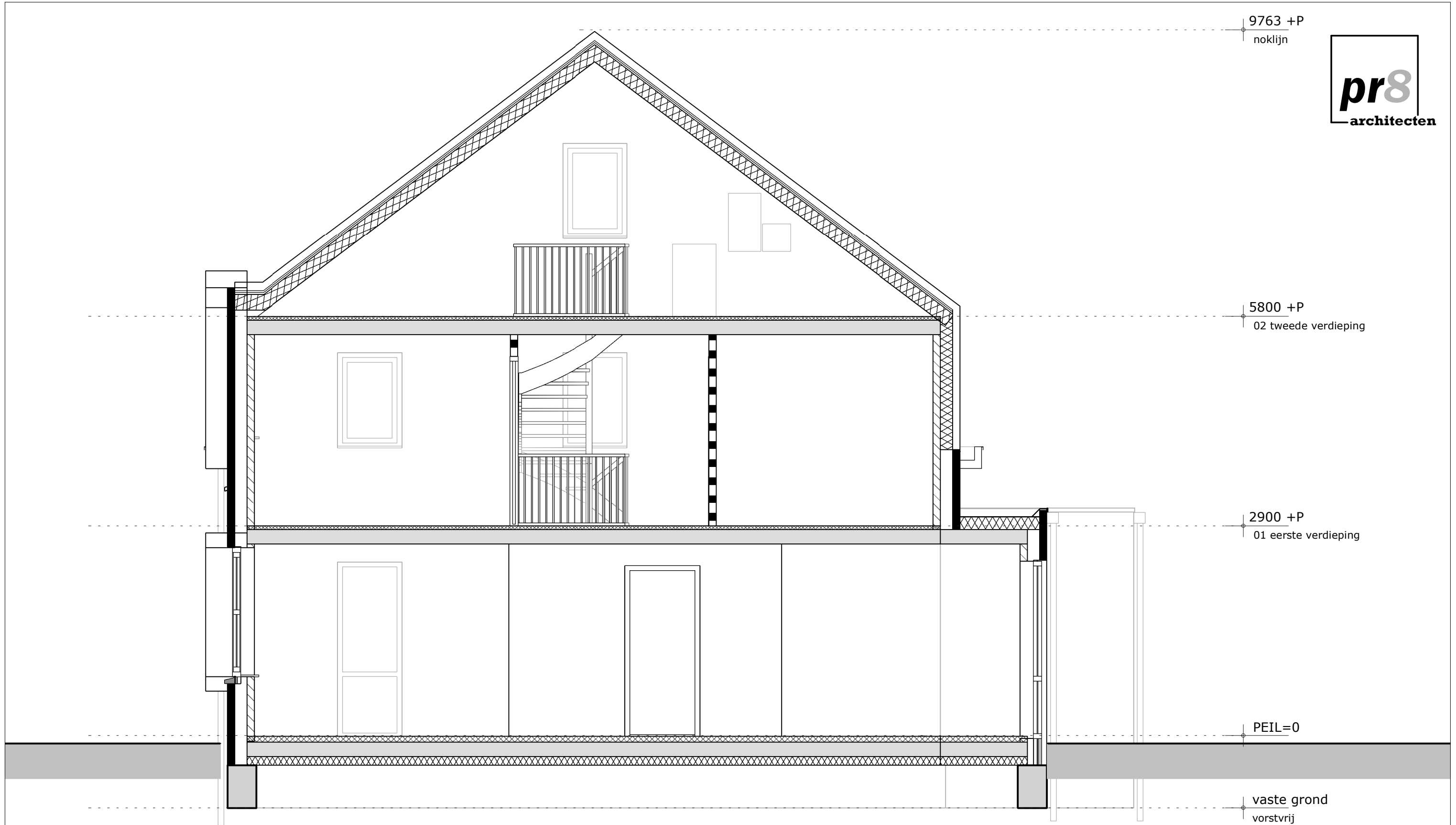


16 woningen plan stakenbeek, oldenzaal
1e verdieping, type A, woningnummer 7, 8, 11, 12

8472












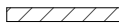
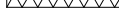
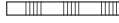






doorsnede B-B



renvooi

	balansventilatie toevoer
	balansventilatie afvoer
	afzuigpunt mech. ventilatie wand
	afzuigpunt mech. ventilatie plafond
rm 	rookmelder volgens NEN 2555
wtp.	warmtepomp
mk.	meterkast
stl.	standleiding
- - - vr.	ventilatiooroster boven kozijn
==== vr.	ventilatiooroster in het kozijn
wm.	wasmachine
	gevelmetselwerk
	schoon metselwerk
	beton
	beton prefab
	kalkzandsteen
	snelbouwsteen
	sandwichpaneel
	lichte scheidingswand
	gevelmetselwerk gekeimd
	bestaande wanden

renvooi elektra

	lichtpunt plafond
	lichtpunt wand
	enkele schakelaar
	enkele schakelaar 2 polig
	enkele schakelaar spatwaterdicht
	dubbele schakelaar
	dubbele schakelaar 2 polig
	dubbele schakelaar spatwaterdicht
	wissel schakelaar
	wissel schakelaar 2 polig
	wissel schakelaar spatwaterdicht
	schakelaar dimmer
	trekschakelaar
	enkel stopcontact geaard
	enkel stopcontact spatwaterdicht
	dubbel stopcontact geaard
	dubbel stopcontact spatwaterdicht
media 	media
th. 	thermostaat
	bel
	beldrukker

